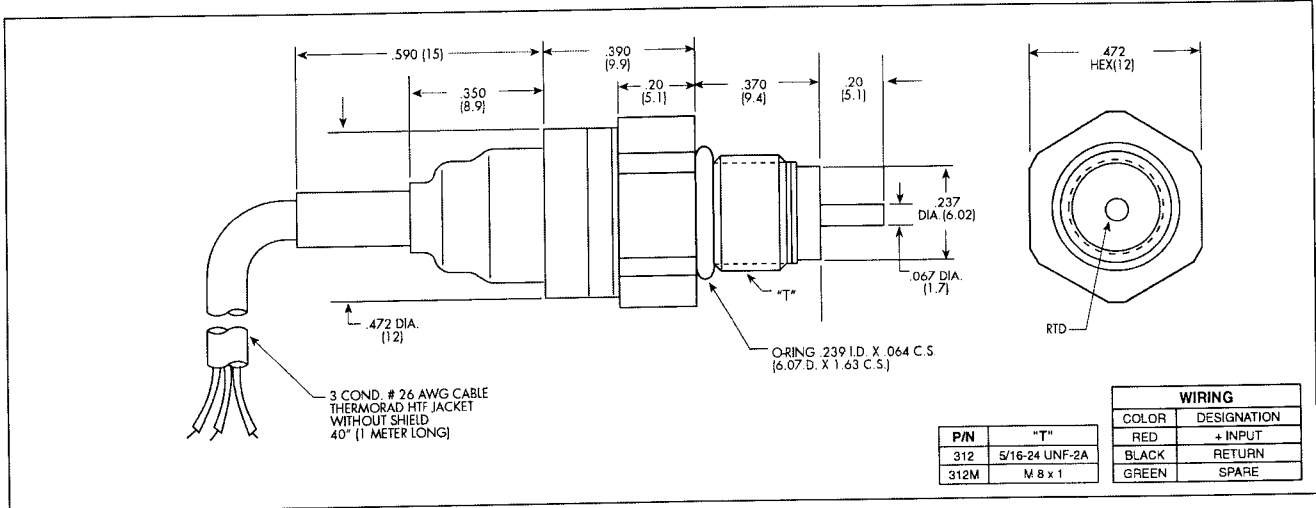
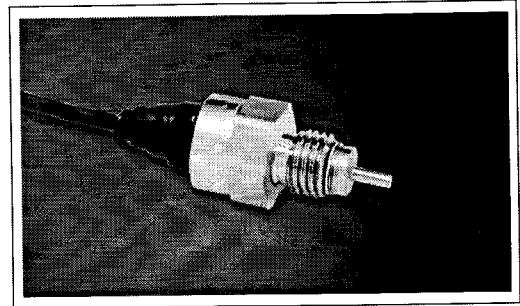


**kulite**  
TEMPERATURE SENSOR

**TTS-312(M) SERIES**

- Robust Construction
- Excellent Long Term Stability
- Fast Response Time
- High Temperature
- Excellent For High Vibration and Thermal Shock
- Low Self Heating
- High Reliability

The TTS-312 utilizes a thin film platinum temperature sensor which provides a short response time as well as high accuracy and long-term stability over a wide temperature range.



SPECIFICATIONS	
Temperature Range	-150°F to +400°F (-100°C to +200°C)
Media	Any Fluid Compatible With 15-5 and 316 Stainless Steel
Sensing Principle	Platinum Class A RTD Per DIN EN 60751 (IEC 751)
Nominal Resistance at 0°C	TTS-A-312(M) 100 Ohms TTS-B-312(M) 500 Ohms TTS-C-312(M) 1000 Ohms
Excitation	1mA (2mA Max.)
Accuracy	± 1°C (Typ.)
Response Time	2 Sec. (Typ.)
Steady Acceleration and Linear Vibration	100g Peak, Sine up to 5000 Hz
Humidity	100% Relative Humidity
Electrical Connection	#26 AWG, 3 Conductor Cable, 40" (1 Meter) Long
Weight	20 Grams (Nom.) Excluding Cable

Dimensions are in inches. Dimensions in parenthesis are in millimeters.

\*Note: Other resistance values available on request as well as mechanical configurations..

Continuous development and refinement of our products may result in specification changes without notice - all dimensions nominal. (B)

KULITE SEMICONDUCTOR PRODUCTS, INC. • One Willow Tree Road • Leonia, New Jersey 07605 • Tel: 201 461-0900 • Fax: 201 461-0990 • <http://www.kulite.com>